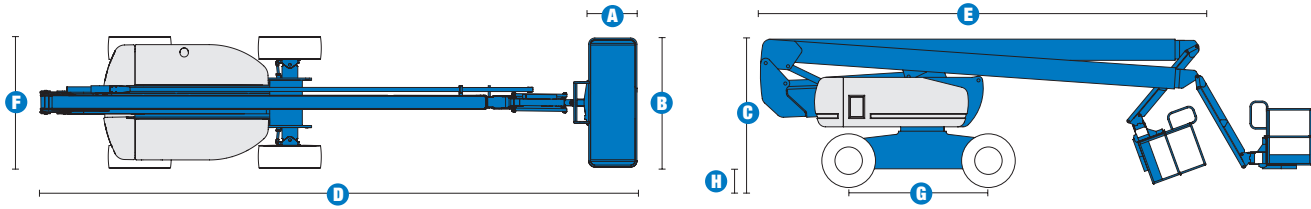


Specifications



MODEL Z™-80/60

| MEASUREMENTS | US | Metric |
|--|------------------|-----------------|
| Working height max* | 86 ft | 26.38 m |
| Platform height max | 80 ft | 24.38 m |
| Horizontal reach max | 60 ft | 18.28 m |
| Up and over clearance max | 29 ft | 8.83 m |
| Below ground reach | 15 ft 10 in | 4.83 m |
| A Platform length - 6 ft / 8 ft | 2 ft 6 in / 3 ft | .76 m / .91 m |
| B Platform width - 6 ft / 8 ft | 6 ft / 8 ft | 1.83 m / 2.44 m |
| C Height - stowed | 9 ft 10 in | 3 m |
| D Length - stowed | 37 ft | 11.27 m |
| E Length - transport | 30 ft | 9.14 m |
| F Width | 8 ft 2 in | 2.49 m |
| G Wheelbase | 9 ft | 2.74 m |
| H Ground clearance - center | 12 in | .30 m |

PRODUCTIVITY

| | | |
|----------------------------------|----------------------|------------|
| Lift capacity | 500 lbs | 227 kg |
| Platform rotation | 160° | |
| Turntable rotation | 360° continuous | |
| Turntable tailswing - riser up | 3 ft 10 in | 1.17 m |
| Turntable tailswing - riser down | 7 ft 4 in | 2.24 m |
| Drive speed - stowed | 3.0 mph | 4.82 km/h |
| Drive speed - raised** | 0.68 mph | 1.1 km/h |
| Lift speed to full height | 76 sec | |
| Gradeability - 2WD*** | 30% | |
| Gradeability - 4WD*** | 45% | |
| Turning radius - 2WS inside | 14 ft 6 in | 4.42 m |
| Turning radius - 2WS outside | 24 ft 6 in | 7.46 m |
| Turning radius - 4WS inside | 7 ft | 2.13 m |
| Turning radius - 4WS outside | 15 ft | 4.57 m |
| Controls | 12 V DC proportional | |
| Tires | 18-625 NHS | 18-625 NHS |

POWER

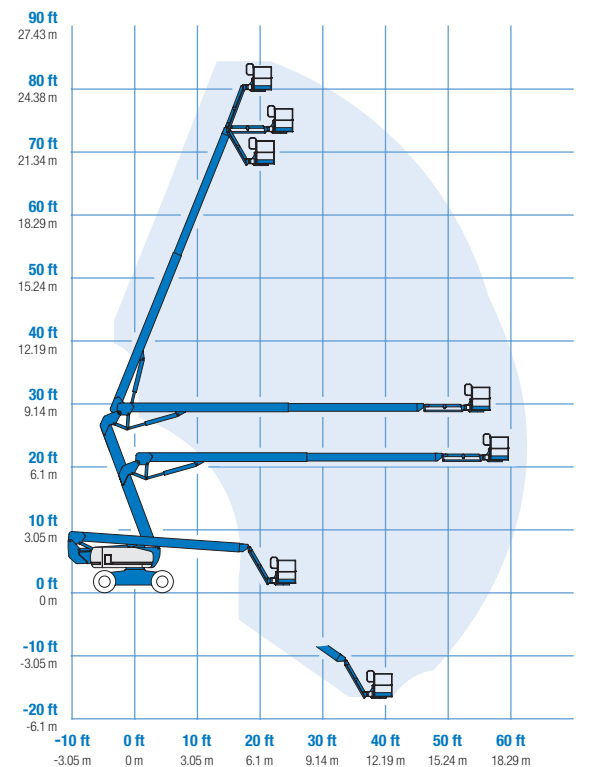
| | | |
|-------------------------|--|-------|
| Power source | Deutz BF4L 2011 4 cylinder diesel 78 hp (58 kW) Perkins 804C-33 4 cylinder diesel 63 hp (50 kW) | |
| Auxiliary power unit | 12 V DC | |
| Hydraulic tank capacity | 45 gal | 170 L |
| Fuel tank capacity | 35 gal | 132 L |

WEIGHT****

| | | |
|-----|------------|-----------|
| 2WS | 35,900 lbs | 16,284 kg |
| 4WS | 37,500 lbs | 17,010 kg |

STANDARDS COMPLIANCE ANSI A92.5, CSA B354.4, CE Compliance, AS 1418.10

RANGE OF MOTION Z™-80/60



* The metric equivalent of working height adds 2 m to platform height. U.S. adds 6 ft to platform height.

** In lift mode (platform raised), the machine is designed to operate on firm, level surfaces only.

*** Gradeability applies to driving on slopes. See operator's manual for details regarding slope ratings.

**** Weight will vary depending on options and/or country standards.

Features

EASILY CONFIGURED TO MEET YOUR NEEDS

PLATFORM OPTIONS

- Steel 8 ft (2.44 m) (standard)
- Steel 6 ft (1.83 m)
- Steel 6 or 8 ft (1.83 or 2.44 m) tri-entry

JIB

- 6 ft (1.83 m) jib boom

POWER OPTIONS

- Deutz diesel 78 hp (58 kW)
- Perkins diesel 63 hp (50 kW)

DRIVE/STEER OPTIONS

- 2WD (standard)
- 4WD
- 2WS (standard)
- 4WS

AXLE

- Oscillating front axle (standard)

TIRE OPTIONS

- Rough terrain foam-filled (standard)
- Rough terrain non-marking foam-filled
- High flotation rough terrain

STANDARD FEATURES

MEASUREMENTS:

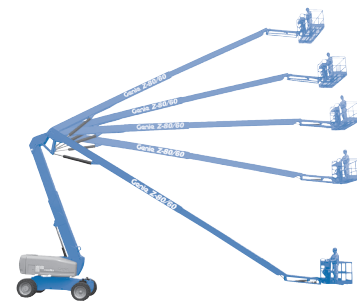
- 86 ft (26.38 m) working height
- 60 ft (18.28 m) horizontal reach
- 29 ft (8.83 m) up and over clearance
- Up to 500 lb (227 kg) lift capacity

PRODUCTIVITY

- 6 ft (1.83 m) jib with 128° range
- Self-leveling platform
- Hydraulic platform rotation
- Fully proportional controls
- On-board diagnostics
- Hydraulic oil cooler
- Drive enable
- AC power to platform
- Horn
- Hour meter
- Tilt alarm
- 360° continuous turntable rotation
- Locking turntable covers
- Positive traction drive
- Two speed wheel motors

POWER

- All engines are emissions compliant
- 12 V DC auxiliary power
- Engine protection package
- Anti-restart engine protection
- Auto engine fault shutdown
- Engine monitoring display
- Deutz intake air heater
- Dual battery



OPTIONS & ACCESSORIES

PRODUCTIVITY

- Platform swing gate
- Half mesh platform inserts with swing gate
- Platform top auxiliary rail
- **Arc Pro 275™ Heavy-Duty Welder package**
- Weld leads to platform
- Air line to platform
- Arctic hydraulic oil
- Arctic hose option (boom hoses only)
- Basic hostile environment kit
- Deluxe hostile environment kit
- Thumb rocker steer
- Deluxe aircraft protection package
- Tool tray
- Fluorescent tube caddy
- Pipe cradles (pair)
- Alarm package
- Panel cradle package*
- Platform work lights
- Front driving lights
- Lockable platform control box covers

*Available on select models

POWER

- AC Generator Packages (3000 or 3500 watts)
- Cold Start Packages
- Diesel scrubber/spark arrestor
- Diesel spark arrestor muffler
- LPG tank only, steel, 33.5 lb (15.19 kg) capacity
- Additional LPG tank with carrier

Genie United States

18340 NE 76th Street
P.O. Box 97030
Redmond, Washington 98073-9730

Telephone **(425) 881-1800**
Toll Free in USA/Canada **800-536-1800**
Fax (425) 883-3475

Genie Europe

The Maltings
Wharf Road
Grantham NG31 6BH
U.K.

Telephone **+44 (0)1476 584333**
Fax +44 (0)1476 584334

Email: infoeurope@genieind.com

Distributed By:

For further information, please contact your local distributor or the Genie Industries sales office listed. Continuous improvement of our products is a Genie policy. Product specifications are subject to change without notice or obligation. The photographs and drawings in this brochure are for illustrative purposes only. Refer to the appropriate Operator's Manual for instructions on the proper use of this equipment. Failure to follow the appropriate Operator's Manual when using our equipment or to otherwise act irresponsibly may result in serious injury or death. Prices and specifications subject to change without notice. The only warranty applicable is the standard written warranty applicable to the particular product and sale. Genie makes no other warranty, expressed or implied. Products and services listed may be trademarks, service marks or trade-names of TEREX Corporation and/or its subsidiaries in the USA and other countries and all rights are reserved. Copyright © 2005 Genie Industries, Inc. "Genie" is a Registered Trademark of Genie Industries, Inc. in the USA and many other countries. Genie is a TEREX Company.