

# SELF-PROPELLED SCISSORS

**Genie**  
A TEREX COMPANY



# SCISSORS SELF-PROPELLED



**WHEN YOU NEED A LIFT,  
YOU KNOW IT MUST BE A GENIE.**

**Genie sets the standard by which other lifts are judged.** Simply put, we build a better lift for every job. Genie's full line of products offers you unmatched performance, safety and reliability. As a subsidiary of TEREX Corporation, we offer our customers easy access to a complete range of other products and services across the construction, mining, utility and road building industries.

**With almost four decades of experience, Genie provides you with the most advanced lifting equipment in the industry.**

The company began in 1966 with the introduction of the Genie Hoist, a portable, pneumatic material lift. Additional lifts and aerial work platforms followed, gaining worldwide recognition with breakthrough designs. Today, Genie remains at the forefront of lifting technology with a commitment to quality production.

**Finding new and innovative ways to help you get the job done.**

Our efforts to produce better products and harness new technology have earned numerous patents worldwide. Our quality-driven, professional team of engineers continually focus on understanding how our equipment is used so they can design products to meet and exceed your ever-changing needs.

**Our team is always working for you.** The Genie Service Team is available around the clock providing support when you need it most, which means more "Up Time" for you, our customer. Genie customers also have access to an ever-increasing range of services from financial funding through TEREX Financial Services (TFS) to an aggressive parts support network that ships most parts within 24 hours.

**The highest quality standards mean you receive the highest quality products.** We set stringent quality standards for each step of the manufacturing process, from design to distribution. Performance is regularly monitored against these standards to ensure superior products. Our goal is to deliver the highest quality products that give you the most value.



**Genie**  
A TEREX COMPANY



# ELEVATED EFFICIENCY



## INDUSTRY-LEADING DESIGN AND PERFORMANCE

Genie is the world leader in lifts, smart blue lifts to be exact. Genie manufactures the most advanced, highest-valued lift equipment in the industry. Genie's ever-expanding line of electric and rough terrain scissor lifts offers you unmatched performance and versatility for increased productivity.

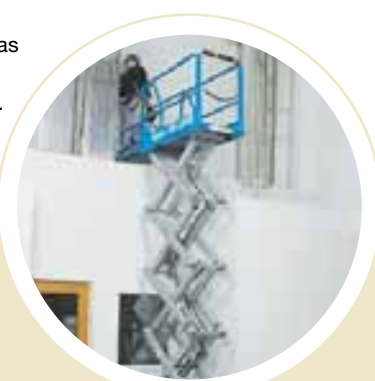
Genie electric scissor lifts offer exceptional mobility to get you into tight work sites where agility and maneuverability are required. These lifts provide the ultimate in productivity and efficiency allowing maximum work space for larger loads and more workers.

Our rough terrain scissor lifts set the standard for powerful performance on the job site. Genie scissor lifts are unrivaled in speed and gradeability which enhances productivity. These are the perfect machines for big outdoor jobs where platform workspace is critical.

# MAXIMIZE YOUR PRODUCTIVITY

## Quiet Convenience

Genie's emission-free electric scissors provide low noise levels, allowing operation inside sound-sensitive areas such as office buildings, shopping malls, hotels, museums and schools.

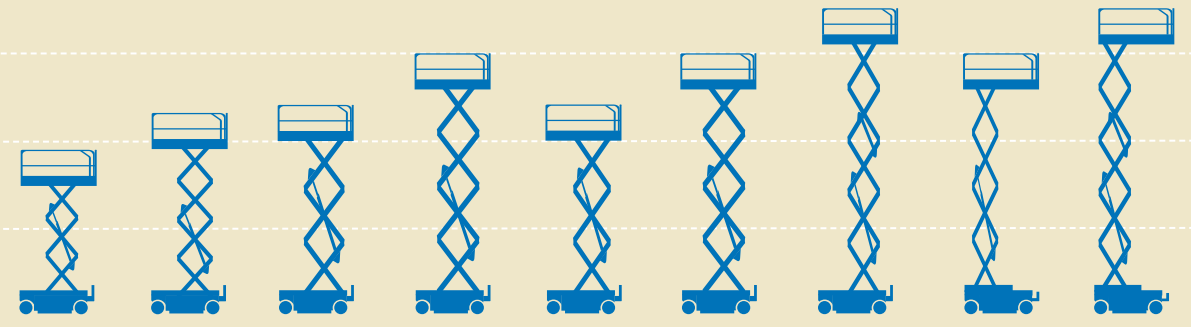


## Perfect solution for increasing worksite productivity

- Great for indoor or outdoor applications with firm, level surfaces.
- Ideal for jobs that require greater lift capacity and maximum platform workspace. Operators can carry larger and heavier combinations of tools and materials.
- The lifts come with non-marking tires and have very high steering angles that provide excellent maneuverability in tight spaces.



40  
30  
20  
10



	<b>GS-1530</b>	<b>GS-1930</b>	<b>GS-2032</b>	<b>GS-2632</b>	<b>GS-2046</b>	<b>GS-2646</b>	<b>GS-3246</b>	<b>GS-2668 DC</b>	<b>GS-3268 DC</b>
WORKING HEIGHT	21 ft 6.6 m	25 ft 7.8 m	26 ft 8.1 m	32 ft 9.9 m	26 ft 8.1 m	32 ft 9.9 m	38 ft 11.75 m	32 ft 9.9 m	38 ft 11.8 m
LIFT CAPACITY	600 lbs 272 kg	500 lbs 227 kg	800 lbs 363 kg	500 lbs 227 kg	1200 lbs 544 kg	1000 lbs 454 kg	700 lbs 318 kg	1250 lbs 567 kg	1000 lbs 454 kg





**STANDARD FEATURES**

**Compact Dimensions**

For space-efficient storage.

**Excellent Maneuverability**

High angle steering provides excellent maneuverability.

**Dual Wheel Disc Brakes**

Allows for smooth deceleration.

**Variable Speed Motor**

Extends battery and motor life by using only the energy needed to do the required work.

**Proportional Controls**

Smooth and predictable, allows the operator to confidently maneuver in tight areas.

**Mobile Joystick**

The ergonomic Joystick Controller operates from the platform or the ground.

**On-Board Diagnostic System**

On-board troubleshooting diagnostics notify the operators of possible fault conditions.

**Extendable Platform**

Enhance your productivity by extending your platform to increase your usable workspace.

**Power to Platform**

Allows operator to use electrically powered work tools on the platform as required by the job.

**Heavy-Duty Tubular Steel Guardrails**

Heavy-duty tubular steel guardrails maximize durability. Telescopic end rail can be raised to accommodate large loads.

**Slip-Resistant Surface**

The solid steel deck platform has a slip-resistant surface.

**Swing-Out Component Trays**

Swing-out battery box and power module allow easy access to components.

**OPENS UP NEW OPTIONS**

**Doorway Access**

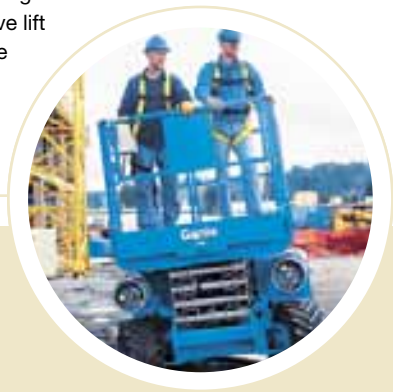
All compact units can easily pass through either a single or double standard doorway except for the GS-2668 DC and GS-3268 DC. An excellent choice when you need to pass through a doorway or drive down tight aisles to reach your worksite.



# REACHING NEW LEVELS OF PERFORMANCE

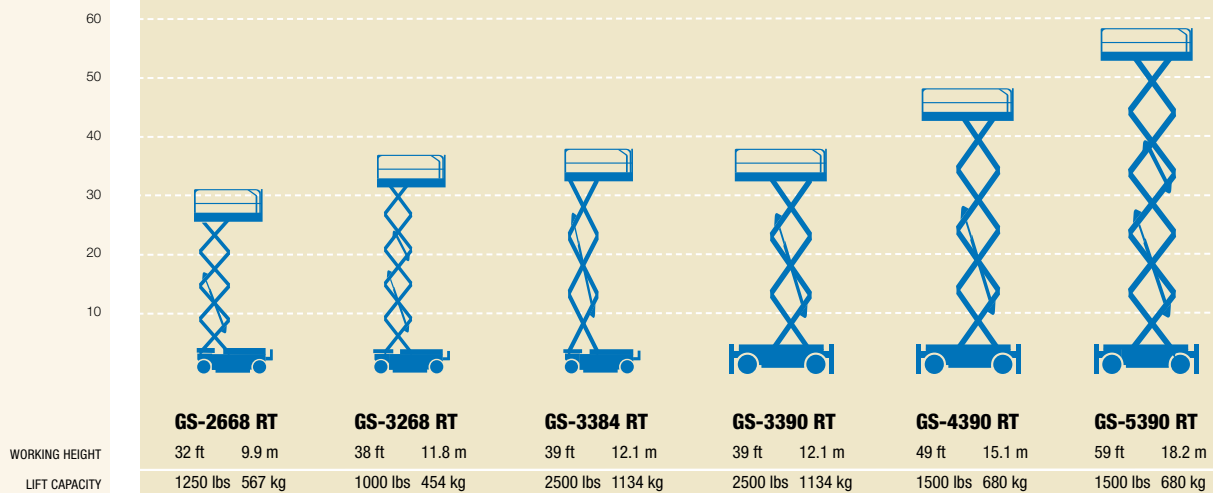
## Performance and Power

These powerful 4WD machines with positive traction control are ideal for increasing productivity in demanding outdoor worksites. Our competitive lift speed and large platforms provide maximum efficiency on the job.



## For maximum productivity

- Ideal choice for rigorous job sites where you need powerful performance to get to your worksite faster and more easily with greater traction.
- The industry solution for electrical, mechanical, plumbing and maintenance contractors, as well as the rental market.
- Outstanding versatility and efficiency when maximum platform workspace for workers and tools is needed.
- Perfect choice to handle the most demanding overhead work access requirements.



WORKING HEIGHT  
LIFT CAPACITY





### STANDARD FEATURES

#### 4WD With Positive Traction Control

Ensures traction when you need it most.

#### Up to 50% Gradeability

Gradeability applies to driving on slopes. See operators manual for details regarding slope ratings.

#### Self-Leveling Hydraulic Outriggers

Automatic leveling hydraulic outriggers are standard only on the GS-5390 RT, optional on other models.

#### Proportional Drive/Lift Functions

Allow for smooth operation.

#### Folding Heavy-Duty Guard Rails

Heavy-duty guardrails fold down quickly without tools for increased accessibility.

#### Dual Entry Gates

Two self-closing gates provide easy access to the platform

#### Removable Platform Railings

Rear platform railing can be removed for easier loading and unloading of materials, available on the 90 series with single extension decks.

#### Durable Diamond-Plate Aluminum Flooring

Large platform with durable diamond-plate aluminum flooring.

#### On-Board Diagnostic System

On-board troubleshooting diagnostics automatically notify operators of possible fault conditions.

#### Easily Accessible Engine

Slide or pull-out engine trays allow access to components for easy maintenance.

#### Power to Platform

Able to utilize a variety of power tools from the platform.

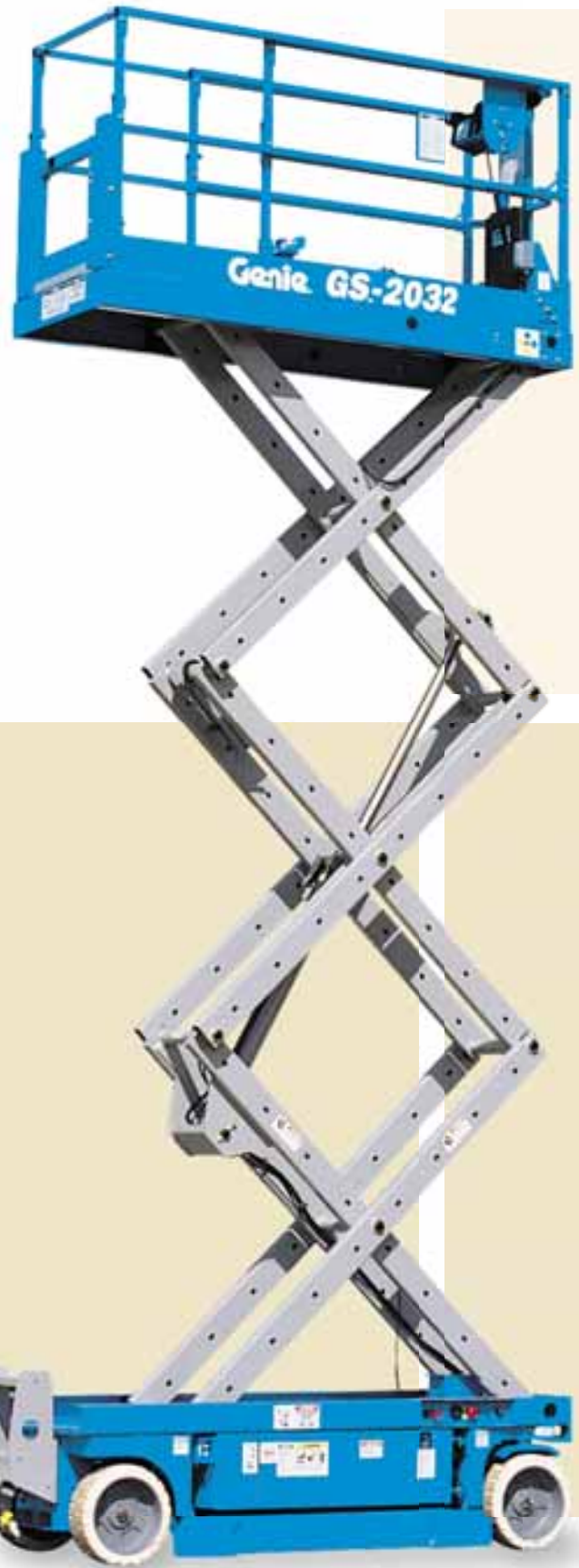
### MORE ROOM TO WORK

#### Slide-Out Extension Deck

On the front of the machine, a single 60 in (1.52 m) multi-position slide-out extension deck comes standard. This additional space gives the operator more room to work and is useful for reaching into hard-to-access areas that are over obstacles.



# OPTIONS FOR ELECTRIC MODELS



### Dual Flashing Beacons

Orange flashing lights warn workers when lift is moving or in operation.



**Easy To Access Battery**

Easy access batteries reduces overall service and maintenance time.



**Non-Marking Tires**

These hard rubber non-marking tires prevent scuffing floors or picking up debris that could otherwise damage a floor.

GS-1530 GS-1930 GS-2032 GS-2632 GS-2046 GS-2646 GS-3246 GS-2668 DC GS-3268 DC

Options	GS-1530	GS-1930	GS-2032	GS-2632	GS-2046	GS-2646	GS-3246	GS-2668 DC	GS-3268 DC
Platform Swing Gate Half Height	O	O	O	S				S	S
Folding Guardrails with Platform Half Height Swing Gate	O	O	O	S	S	S	S	S	S
Air Line to Platform	O	O	O	O	O	O	O	O	O
Platform Work Light(s)	O	O	O	O	O	O	O	O	O
Dual Flashing Beacon	O	O	O	O	O	O	O	O	O
Motion Alarm	O	O	O	O	O	O	O	O	O
Automotive Horn	O	O	O	O	O	O	O	S	S
Pipe Cradle Pair					O	O	O	O	O
Maintenance-Free Battery	O	O	O	O	O	O	O		
Power Inverter (110 V/60 Hz)	O	O	O	O	O	O	O	O	O
Power Inverter (220 V/50 Hz)								O	O
EE Rating	O	O	O	O	O	O	O		
Non-Marking Tires	S	S	S	S	S	S	S	O	O

O = Option  
S = Standard

# OPTIONS

## FOR ROUGH TERRAIN MODELS



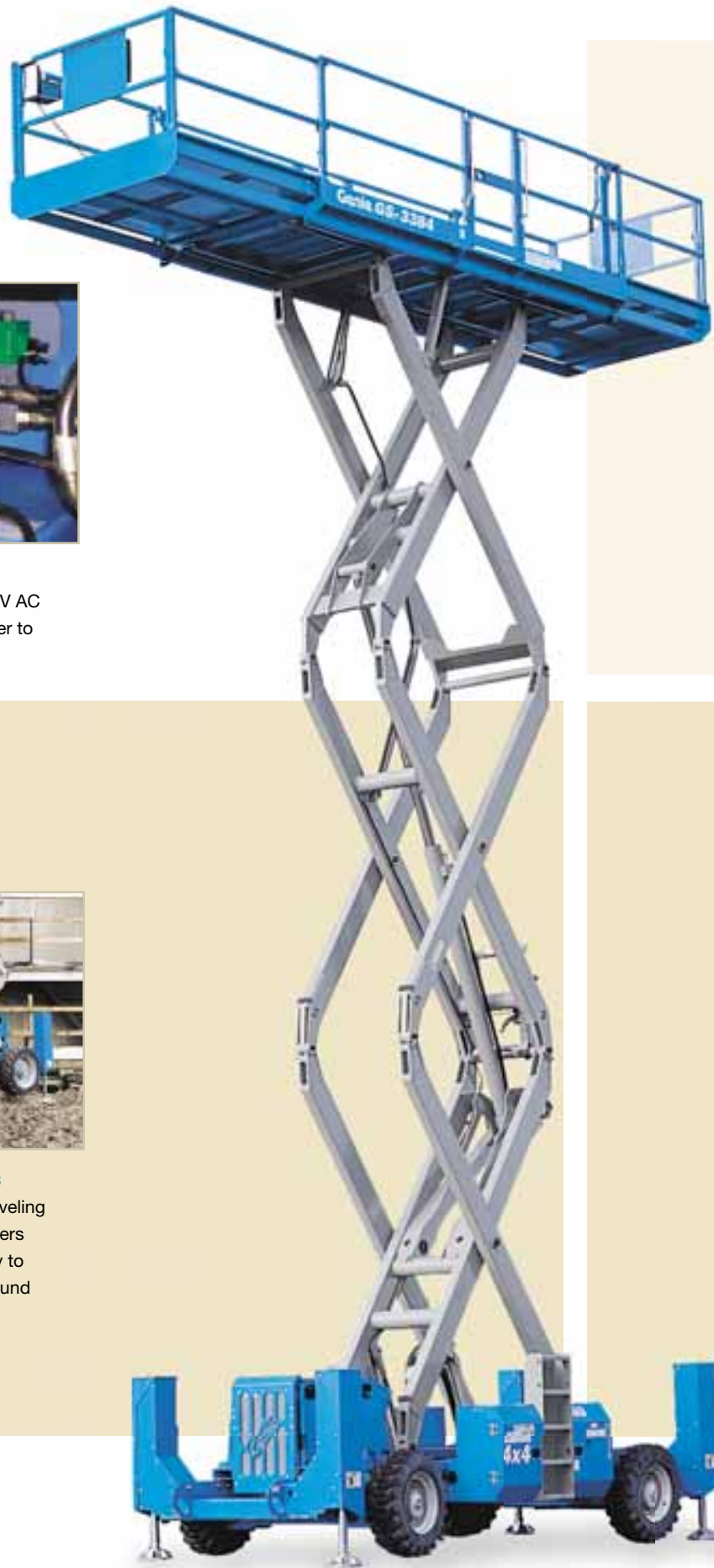
### Generator

This built-in hydraulically driven 120 V AC generator is available to supply power to the platform for operating tools.



### Self-Leveling Hydraulic Outriggers

Save time with Genie's automatic leveling hydraulic outriggers. All four outriggers automatically deploy simultaneously to ensure the lift is level on uneven ground before elevating the platform.





**Dual Slide-Out Extension Decks**

On the front of the machine, a single 60 in (1.52 m) multi-position slide-out extension deck comes standard. When more deck space is needed, you can choose to add a second 48 in (1.22 m) slide-out extension deck on the rear of the machine. Dual-extension decks are not available on GS-2668 RT and GS-3268 RT units.

GS-2668 RT  
GS-3268 RT  
GS-3384 RT  
GS-3390 RT  
GS-4390 RT  
GS-5390 RT

Options	GS-2668 RT	GS-3268 RT	GS-3384 RT	GS-3390 RT	GS-4390 RT	GS-5390 RT
Dual Slide-Out Extension Deck Package (Front & Rear)			○	○	○	○
Air Line to Platform	○	○	○	○	○	○
Platform Work Lights	○	○	○	○	○	○
Dual Flashing Beacon	○	○	○	○	○	○
Motion Alarm	○	○	○	○	○	○
Pipe Cradle Pair	○	○	○	○	○	○
Automatic Leveling Hydraulic Outriggers	○	○	○	○	○	S
Oscillating Axle				S	○	○
2,000 AC Watt Generator (110 V/60 Hz)	○	○	○	○	○	○
Hydraulic Oil Cooler	○	○	○	○	○	○
Hot Weather Kit (Available for Dual Fuel Only)	○	○				
Diesel Scrubber/Spark Arrester			○	○	○	○
Diesel Spark Arrester Without Scrubber			○	○	○	○
Cold Start Packages (by Engine Type)	○	○	○	○	○	○
Spare Propane Tank	○	○	○	○	○	○
Dual Propane Tank Kit	○	○	○	○	○	○
Non-Marking RT Tire	○	○	○	○	○	○
High Flotation Air-Filled Tires			○	○	○	○
High Flotation Foam-Filled Tires			○	○	○	○

○ = Option  
S = Standard



**Oscillating Axle**

Genie's oscillating axle automatically senses the terrain and adjusts the axle position based on ground conditions for maximum stability and a smooth ride. Available on the GS-4390 and GS-5390 only.

# SELF-PROPELLED SCISSORS

## MODELS

### Electric

GS™-1530  
GS™-1930  
GS™-2032  
GS™-2632  
GS™-2046  
GS™-2646  
GS™-3246  
GS™-2668 DC  
GS™-3268 DC

### Rough Terrain

GS™-2668 RT  
GS™-3268 RT  
GS™-3384 RT  
GS™-3390 RT  
GS™-4390 RT  
GS™-5390 RT



A TEREX COMPANY

[www.genieindustries.com](http://www.genieindustries.com)

### Genie United States

18340 NE 76th Street  
P.O. Box 97030  
Redmond, Washington 98073-9730

Telephone **(425) 881-1800**  
Toll Free in USA/Canada **800-536-1800**  
Fax (425) 883-3475

### Genie Europe

The Maltings  
Wharf Road  
Grantham NG31 6BH  
U.K.

Telephone **+44 (0)1476 584333**  
Fax +44 (0)1476 584334  
Email [infoeurope@genieind.com](mailto:infoeurope@genieind.com)

### Distributed By: